



## **Sky Apartments, Homerton Road, Hackney, E9 5FA**

### **£415 Per Week**

A 1 bedroom apartment for rent within this fantastic riverside development 'Matchmakers Wharf' Located in Homerton, Hackney E9.

Situated on the 3rd floor overlooking the Hackney Cut River and Hackney Marches.

Short walk to Homerton station, making an easy commute to Stratford and the City.

Open plan living room with modern fitted kitchen, floor to ceiling windows with glass doors leading out to a large terrace with river views, fitted bedroom and modern bathroom suite.

24 hour concierge, residents gym\*\* and communal residents roof garden.

(\*\*a one off induction fee will need to be paid per tenant when using the gym for the first time)

Comes part furnished. PROPERTY AVAILABLE FROM 30.08.2024

- Matchmakers Wharf, E9
- Terrace Over Canal
- Residents Gymnasium
- 3rd Floor
- 1 Bedroom
- Excellent Transport Links
- Part Furnished
- Luxury Fitted Kitchen
- 24 Hour Concierge
- Available From 30.08.2024

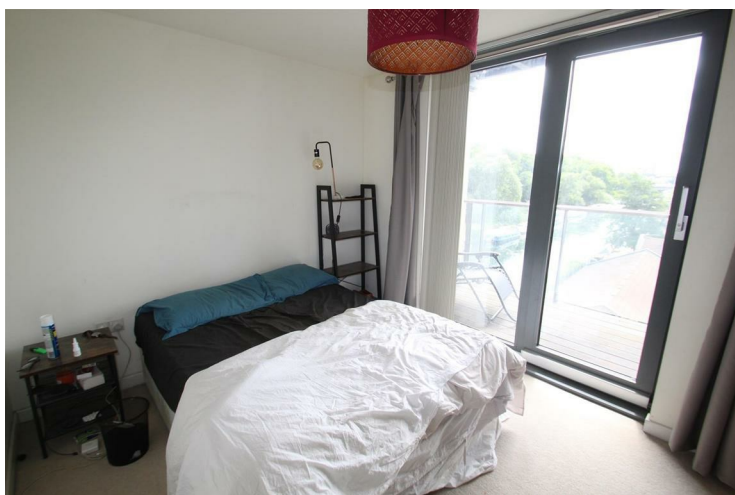
## Sky Apartments, Homerton Road, Hackney, E9 5FA



LIVING ROOM



BATHROOM



BEDROOM



BALCONY



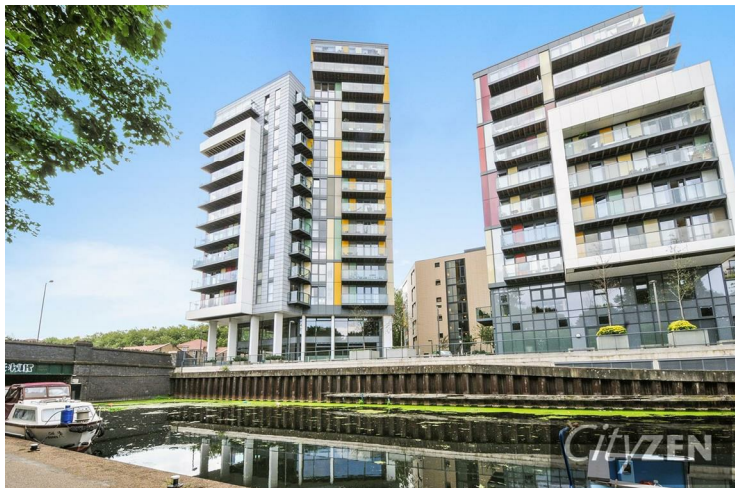
KITCHEN



LIVING ROOM



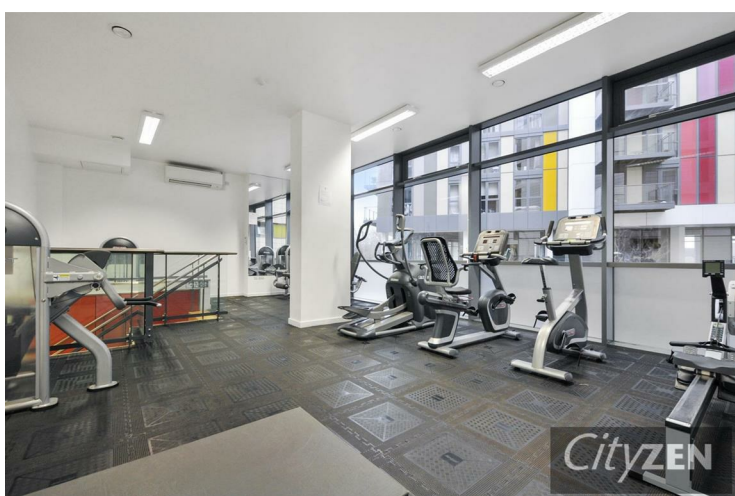
## Sky Apartments, Homerton Road, Hackney, E9 5FA



MATCHMAKERS WHARF



SKY APARTMENTS



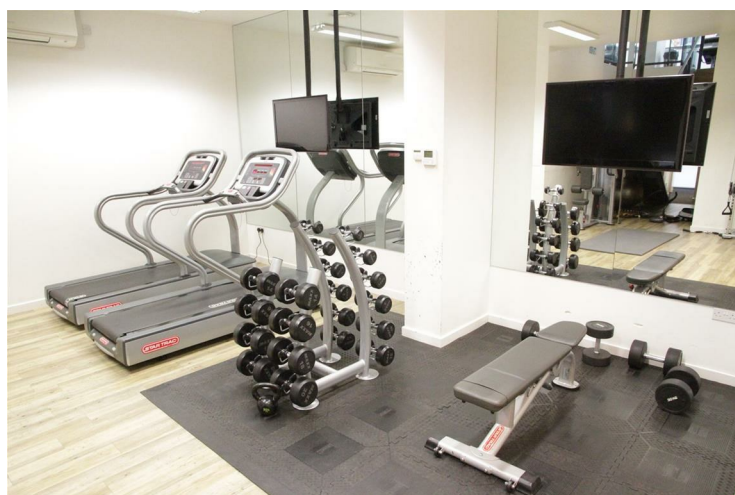
GYM VIEW



INTERNAL COURTYARD



GROUND FLOOR CANAL VIEWS



GROUND FLOOR GYM



## Sky Apartments, Homerton Road, Hackney, E9 5FA



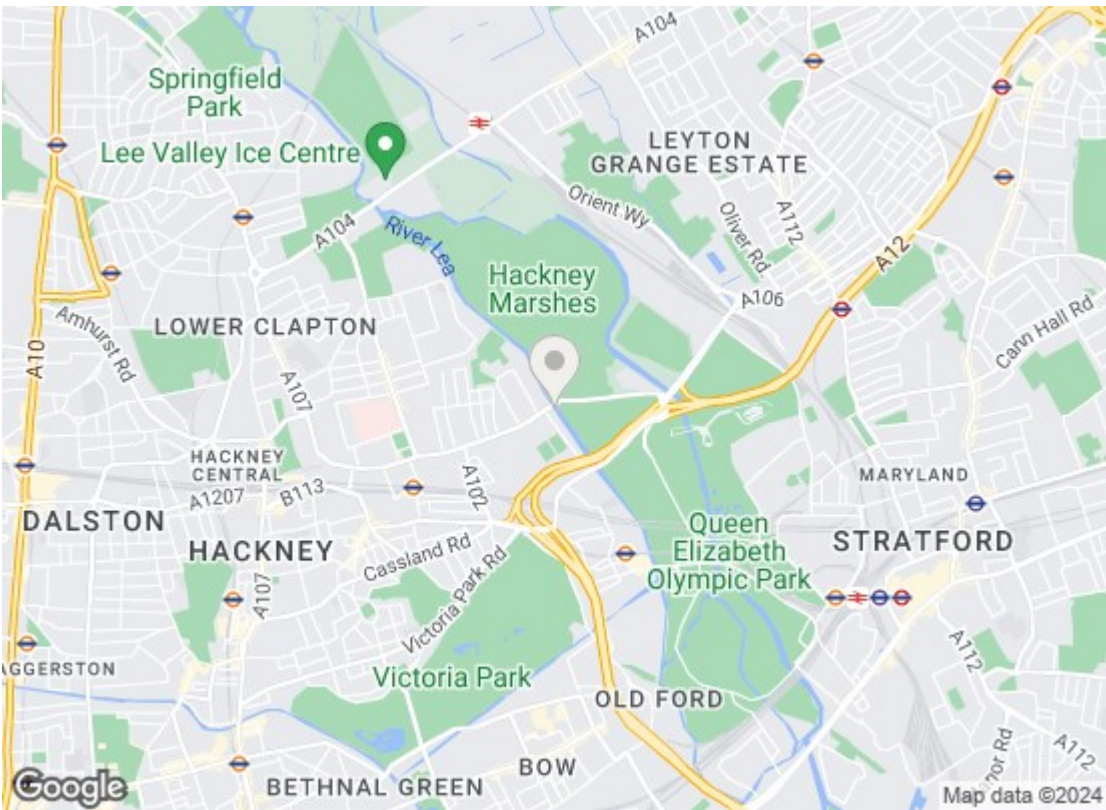
CONCIERGE VIEW



CONCIERGE



COMMUNAL TERRACE VIEW



Energy Efficiency Rating		
	Current	Potential
Very energy efficient - lower running costs		
(92 plus) A		
(81-91) B	82	82
(69-80) C		
(55-68) D		
(39-54) E		
(21-38) F		
(1-20) G		
Not energy efficient - higher running costs		
England & Wales		EU Directive 2002/91/EC
Environmental Impact (CO <sub>2</sub> ) Rating		
	Current	Potential
Very environmentally friendly - lower CO <sub>2</sub> emissions		
(92 plus) A		
(81-91) B		
(69-80) C		
(55-68) D		
(39-54) E		
(21-38) F		
(1-20) G		
Not environmentally friendly - higher CO <sub>2</sub> emissions		
England & Wales		EU Directive 2002/91/EC

We have prepared these property particulars as a general guide to a broad description of the property. They are not intended to constitute part of an offer or contract. We have not carried out a structural survey and the services, appliances and specific fittings have not been tested. All photographs, measurements, floorplans and distances referred to are given as a guide only and should not be relied upon for the purchase of carpets or any other fixtures or fittings. Lease details, service charges and ground rent (where applicable) and council tax are given as a guide only and should be checked and confirmed by your Solicitor prior to exchange of contracts.